

# ANNUAL REPORT

# 2015



WESTERN RIVERS  
CONSERVANCY



*Western Rivers Conservancy protects outstanding river ecosystems throughout the western United States. We acquire land to conserve critical habitat, provide public access for compatible use and enjoyment, and cooperate with other agencies and organizations to secure the health of whole ecosystems.*

## Letter from the President and Chair



Sue Doroff, *President*

Everywhere, and especially in the American West, rivers are life. This is as true at the landscape level as it is for the tiny mayfly laying its eggs on the surface of a cold mountain stream. For people, we all find renewal on rivers, each of us in our own way. Some of us are hikers, and some are biologists. Others are anglers or boaters. You may be a photographer or a birder who hits the river at dawn when the rest of the world (barring caffeinated anglers) is sleeping.

Whatever your reason for loving rivers, and for supporting our work, we thank you. The need for clean, healthy, free-flowing rivers is crucial, just as the need for people who cherish them and who work to preserve them is crucial. Together, we can ensure our rivers stay pristine and functioning for generations to come. With ever-increasing pressure being placed upon our streams, the need for our work, and your help getting the job done, is more important than ever.



Darcy Saiget, *Board Chair*

In 2015, Western Rivers Conservancy launched, continued or completed conservation efforts on 16 rivers in six states across the West. Each of these projects will

have a direct and lasting impact on the river systems we are working to protect and ensure that thousands of acres of riverlands are open to the public.

We hope you enjoy the pages of this report. They will take you from a cold-water stream at the Canadian border, to one of the last free-flowing rivers in southern California, and from the Pacific to the Continental Divide. Thanks to you, the depth and scale of our impact last year was greater than ever before.

For our rivers,

Sue Doroff, *President*

Darcy Saiget, *Board Chair*



# The Importance of Rivers

Rivers are the great connective forces of nature. They link mountains with the sea, alpine forests with coastal estuaries, high deserts with lowland floodplains. They are the pathways of migration for fish and birds, elk and moose, bobcat, wolf and myriad other animals moving within and across the great landscapes of the West. Our anadromous streams are conduits for vast nutrients that are transferred inland from the ocean in the bodies of salmon, which spawn, die and nourish the water, soil, wildlife and forests themselves.

For humans, rivers are also about connections. They link us to nature, they fuse us to our past and they connect us to each other. They lie at the heart of our most treasured places, whether Yosemite or Yellowstone, the Grand Canyon or the Columbia Gorge. They bring us together on float trips, family camping trips and fishing trips with friends. They link our communities and embody our responsibilities to one another, both upstream and down.

Today, except in those rare cases where streams are protected by their remoteness or through the hard work of dedicated people, the health of our rivers is in decline. In a sense, they are becoming more and more disconnected—clogged by dams, disrupted by culverts or drained by diversions and ditches. At the same time, the human connection to rivers has weakened or disappeared altogether.

At Western Rivers Conservancy, we are in the business of reconnecting. By buying and conserving the confluences, tributaries and critical reaches of the West's great rivers, we can protect and improve habitat throughout entire river systems and beyond. By connecting long-term stewards to the riverlands we purchase, we ensure lasting benefits for the streams we set out to conserve. And by connecting people to rivers through improved public access, we can build constituencies for those rivers. Just as humans need rivers, rivers today need constituencies, people who know and love them and will defend them against all threats.

Connections have been at the heart of what we do since our earliest days. One of our first projects was on Washington's Hoh River, where, parcel by parcel, we purchased nearly every acre of corporate-owned land between Olympic National Park and the Pacific Ocean, ensuring this incredible salmon stream was protected in its entirety, from its headwaters to the mouth.

Today, as you will find in the pages of this report, we continue to do this. On the upper Rio Grande in Colorado, we are opening river access where there is precious little public land, and we are investing in a long-term effort to conserve its finest tributaries. On California's Klamath River, we are helping the Yurok people reconnect to their spiritual homeland by creating a salmon sanctuary and tribal community forest that the Yurok will forever steward for the benefit of fish and wildlife. On Washington's Big Sheep Creek we conserved a major swath of wetlands within one of the country's most important movement corridors for large mammals and rare carnivores. And on the John Day, in Oregon, we purchased a ranch at Thirtymile Creek to ensure access to one of the most dramatic river canyons in the West and to conserve vital habitat for steelhead, salmon, bighorn sheep, elk and other wildlife.

The most important connection we work to make at Western Rivers Conservancy is our connection to the future. Our actions today directly determine the quality of the rivers that our children, our grandchildren and their children will find ten, twenty or a hundred years from now. By investing in our rivers today, we can guarantee the health of our rivers for generations to come. The sanctuaries we create will serve as refugia for fish as our rivers get warmer. They will improve habitat connectivity for wildlife. They will help people connect and reconnect with rivers, the great outdoors and each other by safeguarding and expanding those wild places that are open to all, where you can hike, fish, boat or simply kick your feet up on the banks of a healthy, beautiful western river.

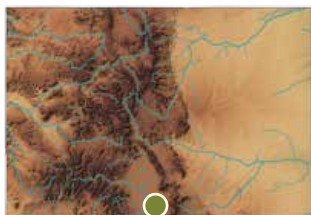


*“As the lifeblood of our community, the Rio Grande is vital to the people, land and wildlife of Colorado’s San Luis Valley and beyond. WRC’s work will enable important restoration and provide public access so people can enjoy a beautiful new area for its fabulous scenery, abundant wildlife and diverse recreation.”*

— RIO DE LA VISTA, *Rio Grande Natural Area Commission*

# A Rare Opportunity on the Upper Rio Grande

Colorado’s San Luis Valley spans 122 miles along the eastern front of the Rocky Mountains, bound by the Sangre de Cristo Range to the east and the San Juan Mountains to the west. It is one of the Centennial State’s great natural and cultural treasures, home to a wealth of public protected lands, including the Rio Grande National Forest, Great Sand Dunes National Park, the Rio Grande Natural Area and the Alamosa, Baca and Monte Vista National Wildlife Refuges.



At the heart of the San Luis Valley is the Rio Grande, which begins its 2,000-mile descent to the Gulf of Mexico from headwaters high in the San Juans, before flowing across the valley floor and south into New Mexico. While much of the valley is high desert, the tributaries, oxbows, wetlands and riparian areas of the Rio Grande provide excellent habitat for wildlife,

including the vast birdlife for which the valley is famous. Huge flocks of waterfowl, a plethora of songbird species and over 95 percent of the Rocky Mountains’ sandhill crane population all inhabit the San Luis Valley.

Last year, Western Rivers Conservancy continued an effort we launched in 2014 to conserve the upper Rio Grande and its principal tributaries. The first project in that effort was a 16,707-acre acquisition along four miles of the Rio Grande, a property we worked to purchase throughout 2015. By acquiring these lands we will conserve a crucial reach of the Rio Grande in an area that has lost significant fish and wildlife habitat to poor management, and where precious little riverfront is accessible to the public. The project will also set the stage for acquisitions elsewhere on the river and its tributaries.

The property, known as Brownie Hills, lies within the congressionally designated Rio Grande Natural Area, located between the Alamosa National Wildlife Refuge and New Mexico’s Rio Grande Wild and Scenic River corridor. Our efforts will provide much-needed access to the river, and enable restoration activities that benefit imperiled native fish, like Rio Grande chub and Rio Grande sucker, and protect an area with Critical Habitat for the endangered southwestern willow flycatcher. We will also conserve vital winter habitat for Rocky Mountain elk, mule deer and pronghorn.



WRC’s purchase of 16,707 acres along the upper Rio Grande will conserve habitat that sustains the diverse birdlife of the San Luis Valley, including the endangered southwestern willow flycatcher (left).



## RIO GRANDE COLORADO

**PROJECT SIZE**  
16,707 acres

**RIVER MILES**  
Mainstem: 4

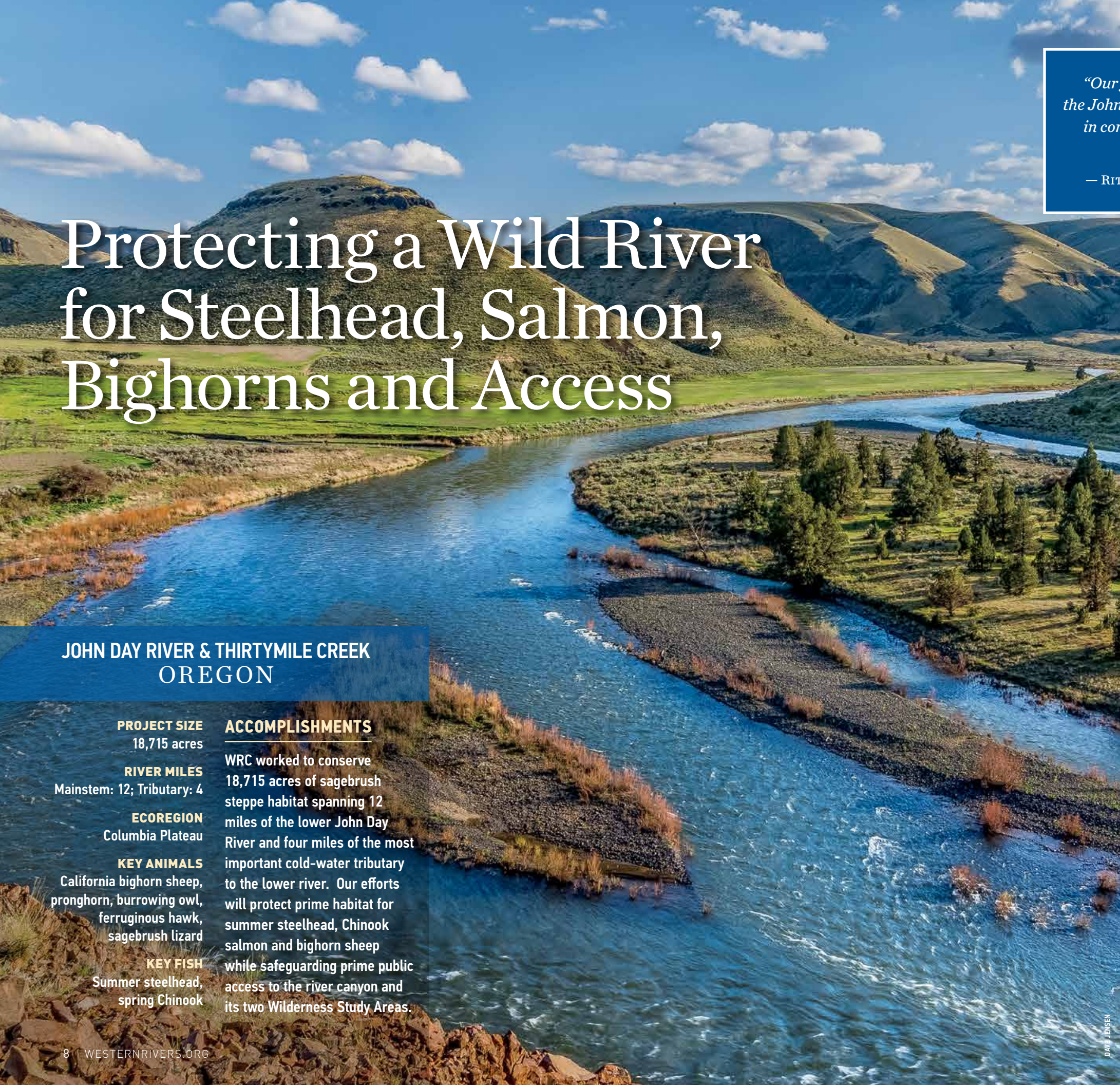
**ECOREGION**  
Southern Rockies, Southwest

**KEY ANIMALS**  
Rocky Mountain elk, American pronghorn, sandhill crane, southwestern willow flycatcher

**KEY FISH**  
Rio Grande cutthroat trout, Rio Grande chub, Rio Grande sucker

### ACCOMPLISHMENTS

WRC worked to acquire a 16,707-acre ranch in the San Luis Valley to conserve four miles of the Rio Grande within the Rio Grande Natural Area. The project will protect prime habitat for migratory birds and excellent winter habitat for elk, antelope and other ungulates. It will also create public access in an area where almost no river access exists.



# Protecting a Wild River for Steelhead, Salmon, Bighorns and Access

## JOHN DAY RIVER & THIRTYMILE CREEK OREGON

**PROJECT SIZE**  
18,715 acres

**RIVER MILES**  
Mainstem: 12; Tributary: 4

**ECOREGION**  
Columbia Plateau

**KEY ANIMALS**  
California bighorn sheep, pronghorn, burrowing owl, ferruginous hawk, sagebrush lizard

**KEY FISH**  
Summer steelhead, spring Chinook

**ACCOMPLISHMENTS**

WRC worked to conserve 18,715 acres of sagebrush steppe habitat spanning 12 miles of the lower John Day River and four miles of the most important cold-water tributary to the lower river. Our efforts will protect prime habitat for summer steelhead, Chinook salmon and bighorn sheep while safeguarding prime public access to the river canyon and its two Wilderness Study Areas.

*“Our family has been working this ranch for generations, and the John Day River is part of all of us. We’re proud to play a part in conserving this incredible stretch of the river and to leave a legacy for future generations.”*

— RITA RATTRAY, Homesteader Descendant, Fourth Generation Rancher



The 70-mile float through the lower John Day River canyon is one of the West’s great multi-day river trips. Beneath the open skies of eastern Oregon, the Wild and Scenic John Day River snakes its way across some of the last great expanses of sagebrush steppe, carving sweeping river bends into the Columbia Plateau. Bighorn sheep edge their way along basalt cliffs above the river, and the smell of sagebrush hangs in the air. For decades, however, there has been only one feasible overland access point to this entire stretch of the river: Rattray Ranch at Thirtymile Creek.



In 2014, Western Rivers Conservancy purchased the ranch, continuing our effort to improve access to a scenic river corridor that was almost entirely closed to the public, and to protect the finest habitat and key cold-water tributaries to the lower John Day. The project follows on the heels of our creation of Cottonwood Canyon State Park, which protected 16 miles of the John Day, downstream from Thirtymile Creek.

The importance of Thirtymile Creek lies in its size and location. It is the largest cold-water tributary of the lower John Day and the most important summer steelhead spawning and rearing stream on the lower river. The ranch spans the confluence of Thirtymile Creek and the John Day and includes a grazing lease that will allow us to conserve 18,715 acres in all. Our acquisition will enable restoration of the lower four miles of Thirtymile Creek, conserve 12 miles of the mainstem John Day and ensure permanent public access to the river at this highly scenic location.

The project lands lie adjacent to the Thirtymile and North Pole Ridge Wilderness Study Areas, at the heart of Oregon’s best habitat for California bighorn sheep. The area supports an estimated 650 bighorns, the largest herd in the state. The ranch is home to Rocky Mountain elk, mule deer, pronghorn antelope and mountain lion, as well as raptors, upland game birds and numerous sensitive bird species. Our work will also conserve prime habitat for the John Day’s imperiled run of chinook salmon.

We plan to convey the property to the Bureau of Land Management, which will manage the lands for the sake of fish and wildlife, for compatible upland grazing and to ensure low-impact public access to the John Day. Our vision is of a great Oregon river that is not only accessible to everyone, but able to sustain the increasingly rare fish and wildlife that inhabit this free-flowing river.



Exceptional by nearly every measure, Oregon’s John Day River flows for 284 miles from the Strawberry Mountains to the Columbia River. It is a stronghold for summer steelhead and supports exceptional wildlife including California bighorn sheep (right).



*“The Mojave is that rarest of the rare: a desert river, a flowing oasis. Its fragile riparian zone is the only refuge in a vast landscape for water-loving birds: cuckoos, chats, vireos, and flycatchers. Someday, the rare Mojave chub may even find its way back to the river, delivered from the artificial ponds where it now lives, to flowing water. This is a small river with a big future.”*

— PETER MOYLE

FISHERIES BIOLOGIST, PREEMINENT EXPERT ON CALIFORNIA NATIVE FISHES

In 2015, Western Rivers Conservancy launched an exciting effort to conserve a stretch of southern California's Mojave River, one of the Golden State's most imperiled streams. Often referred to as a “river upside down,” the Mojave flows subsurface for much of its length. Despite its unorthodox hydrology, the Mojave still manages to sustain the only significant riparian habitat in the western Mojave Desert. Its water, whether underground or on the surface, is critical to the increasingly rare plants and wildlife that rely on it. This is especially true for those rare stretches that flow above ground, where the Mojave River brings an otherwise barren landscape to life.



Between the southern California towns of Victorville and Helendale, the underlying bedrock forces the Mojave River to the surface, and year-round flows nourish a lush 15-mile corridor of cottonwoods and willows, rich with bird, insect and plant life. This oasis in the Mojave Desert, known as the Transition Zone, is where WRC is focusing its efforts. The

ranch we worked to acquire throughout FY 2015 contains the most significant stand of riparian habitat within this unique stretch of the river.

Protection of the Mojave, especially where it flows above ground, is crucial to the recovery of numerous imperiled bird species, including endangered southwestern willow flycatcher, endangered least Bell's vireo and threatened yellow-billed cuckoo. It is also critical to the recovery of the endangered Mojave tui chub, a small endemic fish that once lived throughout the Mojave but is now only found in rare pockets. Conservation of the ranch will support populations of migratory birds, threatened desert tortoise and several California species of special concern, including Mojave River vole, southwestern pond turtle, brown-crested flycatcher, long-eared owl, summer tanager and yellow warbler.

We are now working to identify a long-term steward to manage the lands as a reserve with low-impact public use. The property has long been a top conservation priority for the US Fish & Wildlife Service, the State of California and local and national conservation organizations. WRC's acquisition of these lands will finally make this a reality and ensure this vital reach of the Mojave River is protected forever.



WRC's efforts on the Mojave River will protect one of the most crucial reaches of this entire stream, a rare stretch that flows above ground. This four-mile segment is an oasis for imperiled animals like the long-eared owl (left), desert tortoise and arroyo toad.

KRISTIA SCHLICKER

# Conserving an Oasis in the Mojave Desert



## MOJAVE RIVER CALIFORNIA

**PROJECT SIZE**  
1,640 acres

**RIVER MILES**  
Mainstem: 4

**ECOREGION**  
Southwest

**KEY ANIMALS**  
Southwestern willow flycatcher, least Bell's vireo, Mojave river vole, desert tortoise

**KEY FISH**  
Mojave tui chub

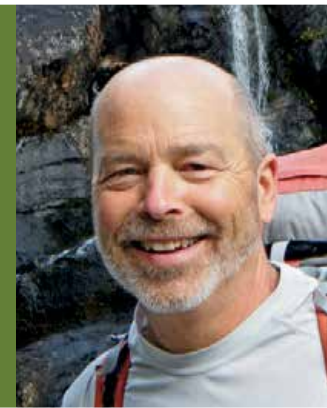
### ACCOMPLISHMENTS

WRC continued its effort to protect one of the most critical reaches of the Mojave River, a rare four-mile stretch where the Mojave flows above ground and creates an oasis in the Mojave Desert. The ranch we worked to acquire provides important habitat for numerous threatened, endangered and sensitive species.

# Saving a Riparian Gem for Wildlife and Hikers

*“The Pacific Northwest National Scenic Trail is one of the country’s great thru-hikes, soon to rival the Pacific Crest and Appalachian Trails. WRC’s acquisition at Big Sheep Creek guarantees a wildlife corridor and protects the trail and viewscape that hikers, mountain bikers and equestrians will enjoy in perpetuity along this stretch.”*

— REED WAITE, Executive Director, Pacific Northwest Trail Association



The Pacific Northwest National Scenic Trail begins at Glacier National Park, high in the Rocky Mountains, and winds its way west for 1,200 miles to the Pacific Ocean. Shortly after the trail crosses into northeastern Washington, it enters one of the most important wildlife corridors in the Pacific Northwest, an area known as “the Wedge.” Viewed on a map, the Wedge is an inverted triangle, pointing down from Canada and bound by the Kettle River, the Columbia River and the Canada-United States border.



At the heart of the Wedge is a Columbia River tributary named Big Sheep Creek, a crystal-clear, cold-water stream teeming with rare redband rainbow and bull trout. It is the centerpiece of a broad, gentle valley where fertile riparian areas and rich meadows and wetlands provide excellent habitat for many charismatic and rarely seen species. Rocky Mountain bighorn sheep, mountain goat, Rocky Mountain elk, moose, Canada lynx, wolverine, pine marten and more than half of Washington’s recovering grizzly bear population all inhabit the valley.

Last year, Western Rivers Conservancy acquired the second phase of a 2,440-acre property known as the Bennett Meadows tract, a parcel that includes some of the richest wildlife habitat within the Wedge. We purchased the first phase of the property in 2014. Named for its extensive meadows and wetlands, the Bennett Meadows tract spans nearly five miles of Big Sheep Creek, one mile of American Fork Big Sheep Creek and more than two miles of the Pacific Northwest Trail.

In addition to its relevance to our National Scenic Trail system, the property is cherished by local and regional outdoor enthusiasts. Big Sheep Creek offers outstanding fishing, hunting, hiking and dispersed camping opportunities, and the property is bordered on two sides by the Colville National Forest. By acquiring these lands and conveying them to the national forest, we will ensure continuity along the Pacific Northwest National Scenic Trail, which can now run through the property. Our efforts will ensure public access to the area, improve the integrity of a major wildlife corridor, and guarantee that this vital reach of Big Sheep Creek is protected in perpetuity.

Big Sheep Creek flows through one of the most important wildlife corridors in the West, providing habitat for grizzly bear, moose (right), bighorn sheep and mountain goat. Our efforts will conserve vital meadows and wetlands and key habitat for two imperiled trout species.



DAVE JENSEN

TOM AND PAT LEESON

## BIG SHEEP CREEK WASHINGTON

**PROJECT SIZE**  
2,440 acres

**RIVER MILES**  
Mainstem: 4.75  
Tributaries: 1.5

**ECOREGION**  
Northern Rockies

**KEY ANIMALS**  
Moose, grizzly bear,  
wolverine, Canada lynx

**KEY FISH**  
Redband rainbow trout,  
bull trout

### ACCOMPLISHMENTS

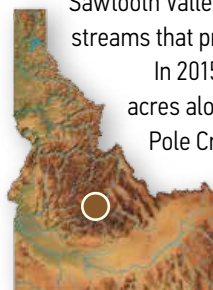
In northeastern Washington, WRC purchased the second phase of a 2,440-acre property in an effort to protect some of the finest riparian habitat within a major wildlife corridor. The project will benefit rare redband and bull trout and ensure through-access along the new Pacific Northwest National Scenic Trail.



*“The Salmon River is one of the country’s most treasured and iconic rivers, and Pole Creek is one of its most essential headwater tributaries. WRC has been a vital component in the recent combined and concerted efforts to fully restore and protect Pole Creek. Thank you, WRC!”*

— MARK MOULTON, Fisheries Biologist, Sawtooth National Recreation Area

Idaho’s Salmon River plays host to one of the greatest fish migrations on Earth, a journey of more than 900 miles from the Pacific Ocean inland to the Rocky Mountains. As if distance weren’t challenge enough, humans threw in eight dams on the Columbia and Snake Rivers, which salmon and steelhead must navigate before they reach the Salmon River. After their epic journey, fish bound for the upper Salmon River finally reach their natal streams in the headwaters of the Sawtooth National Recreation Area. Here, in the high Sawtooth Valley, the snowcapped Sawtooth Mountains tower over small tributary streams that provide crucial habitat for Chinook, steelhead and bull trout.



In 2015, Western Rivers Conservancy launched an effort to acquire 619 acres along one of the most important of these tributaries, a stream called Pole Creek. Located on the eastern side of the Sawtooth Valley, just below

Galena Pass, Pole Creek is designated Critical Habitat for chinook, steelhead and bull trout for most of its length. Unlike tributaries on the western side of the valley, which have granite streambeds, Pole Creek is sedimentary and volcanic in origin, which means more nutrients for insects and riparian life and

excellent spawning and rearing habitat for salmon and steelhead.

Given Pole Creek’s importance, the Sawtooth National Forest has ranked the stream its highest priority for habitat recovery. Pole Creek has been the focus of an extensive restoration effort by local and national nonprofits, local landowners and state and federal agencies. Millions of dollars have been invested in the stream to remove culverts, improve fish passage and increase flows in the stream during peak irrigation season.

WRC’s purchase of these lands, which include a mile of Pole Creek and a short stretch of the mainstem Salmon River itself, builds on these extensive conservation efforts. Habitat quality within the creek is on the upswing, and protecting the stream’s riparian areas will help prevent setbacks to the investments already made. By conserving the property, we can prevent future development along this key reach of the creek and eliminate grazing in the sensitive riparian areas. Ultimately, we will ensure that a mile of prime salmon and steelhead habitat in one of the West’s greatest salmon streams is protected forever.



THOMAS DUNKLIN

Pole Creek is one of the most important tributaries to the Salmon River when it comes to spawning and rearing habitat for Chinook salmon (left). WRC is working to conserve a mile of the stream near its confluence with the Salmon River.

KIRK ANDERSON

# Bolstering Efforts to Recover the Salmon River

## POLE CREEK & THE SALMON RIVER IDAHO

**PROJECT SIZE**  
619 acres

**RIVER MILES**  
Pole Creek: 1

**ECOREGION**  
Middle Rockies

**KEY ANIMALS**  
Black bear, Rocky Mountain elk, mountain lion, golden eagle

**KEY FISH**  
Chinook salmon, summer steelhead, bull trout

### ACCOMPLISHMENTS

Within Idaho’s Sawtooth National Recreation Area, WRC launched an effort to conserve a mile of Pole Creek, a top-priority tributary to the Salmon River with extensive designated Critical Habitat for chinook salmon, steelhead and bull trout.

# A Cold-Water Sanctuary in the Heart of Redwood Country

## KLAMATH RIVER AND BLUE CREEK CALIFORNIA

**PROJECT SIZE**  
47,097 acres

**RIVER MILES**  
Mainstem: 25; Blue Creek: 9  
Tributaries: 50

**ECOREGION**  
Klamath-Siskiyou

**KEY ANIMALS**  
Humboldt marten, marbled murrelet, northern spotted owl, Pacific fisher, mardon skipper

**KEY FISH**  
Coho, fall and spring Chinook, winter steelhead, Pacific lamprey, green sturgeon

### ACCOMPLISHMENTS

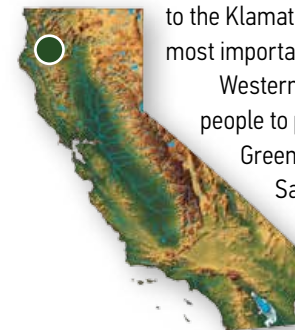
WRC acquired another 6,479 acres along the Klamath River, bringing us within striking distance of completing a major conservation effort to forever protect Blue Creek, a cold-water lifeline for some of the largest salmon and steelhead runs in the West. The acquisition leaves just under 10,000 acres to go.

*“If Blue Creek disappeared, all of this would disappear—the salmon, the steelhead, the animals, everything. People who’ve never been up here can never imagine how special this place is. Without Blue Creek, nothing would exist on the Klamath River.”*

— PERGISH CARLSON, Yurok Tribal Member



Flowing from remote headwaters high in northern California’s Siskiyou Mountains and cooled by the perpetual fog of the Redwood Coast, Blue Creek is a cold-water lifeline for some of the greatest runs of salmon and steelhead in the West. The stream is crucial to the wildlife and overall health of one of the most biologically diverse regions on the planet, the Klamath-Siskiyou. For the Yurok, California’s largest Native American tribe, Blue Creek is the spiritual centerpiece of a culture that is tied to the Klamath River and its tributaries, and especially to Blue Creek, the most important inflow of cold water on the lower river.



Western Rivers Conservancy is working in partnership with the Yurok people to purchase over 47,000 acres of temperate rainforest from Green Diamond Resource Company to create the Blue Creek Salmon Sanctuary and Yurok Tribal Community Forest. One of the most important conservation initiatives in the country today, the effort will ensure the Blue Creek watershed is safeguarded in its entirety, from pristine headwaters that are already protected in the Siskiyou Wilderness, to its confluence with the Klamath River. Once the Yurok acquire the lands, they will manage them to enhance salmon and steelhead recovery, improve old-growth forest habitat and benefit the rich wildlife of the Klamath-Siskiyou ecoregion.

To fund our efforts, we are pioneering new ground in conservation finance, bringing diverse public and private funding to the table, including New Markets Tax Credits, carbon offset sales, endangered species funding and foundation and individual support. Our partners include the Keneda Fund, the David and Lucile Packard Foundation, California Department of Fish and Wildlife, California Wildlife Conservation Board and California Coastal Conservancy.

In FY 2015, WRC took another major step forward in this landmark effort, purchasing an additional 6,479 acres along Blue Creek and the Klamath River. With this acquisition, a total of 37,205 acres have now been acquired, leaving just under 10,000 acres to go. Once the project is complete, 73 square miles of forest will be forever conserved, the Yurok people will have regained the crown jewel of their spiritual homeland, and Blue Creek will be forever safeguarded by a community whose greatest cultural, spiritual and economic interests are healthy forests, healthy habitat and healthy returns of salmon and steelhead.

Northern spotted owl, California condor, Humboldt marten and Pacific fisher (right) are four of many imperiled species that will benefit from WRC’s conservation efforts at Blue Creek (left), which will protect over 47,000 acres of coastal temperate rainforest.





*“Once you see and spend some time on the North Umpqua, it’s in your heart forever. I feel incredibly lucky to have fished this river when it was relatively unknown. WRC’s work at Swiftwater will help ensure future generations are as blessed as I’ve been since I first discovered the secrets and remarkable beauty of this great river over 70 years ago.”*

— FRANK MOORE

*North Umpqua River Guardian & Legendary Fly Fisherman*

Few rivers capture the imagination of fly anglers like Oregon’s North Umpqua. With its runs of wild steelhead, spectacular setting, and 33 miles of fly-fishing-only water, the river looms large in the minds of anglers from around the globe. Increasingly, the river resides on the bucket lists of non-anglers, too. Traced by the North Umpqua National Recreational Trail for 79 miles, the river has become a haven for hikers, mountain bikers, backpackers and boaters as well.



While the North Umpqua makes an exceptional playground, what really sets it apart is its clean, cold water that sustains an extraordinary fishery. The North Umpqua is one of only two coastal streams in Oregon that rise in the Cascade Range rather than the Coast Range. Fed by Cascade snowmelt, the North Umpqua flows cold and clear year-round, sustaining healthy runs of spring Chinook, coho salmon and steelhead.

Thanks to efforts by anglers and other conservationists, the river is protected along much of its length by multiple designations, including the North Umpqua Wild and Scenic River. Despite its protections, parts of the North Umpqua remain at risk.

In summer 2015, Western Rivers Conservancy committed to purchase 211 acres along a mile of the North Umpqua, at the head of the North Umpqua Trail and the gateway to the fly-fishing-only section. The need arose when Douglas County concluded it had to dispose of Swiftwater County Park, which protects crucial river access, a key trailhead and a largely unbroken stand of old-growth forest along the river. Rather than see the parcel logged or developed, WRC acted to acquire and conserve the property.

The project will keep a key reach of the National Recreation Trail in public ownership and conserve large stands of ancient forest, which provide vital shade for the river and harbor diverse wildlife, including northern spotted owl, bald eagle, Roosevelt elk, black bear and river otter. The project will also protect crucial spawning habitat for anadromous fish, including nearly a mile of Critical Habitat for threatened Oregon coast coho. Our goal is to convey the lands to the BLM for inclusion and protection within the Wild and Scenic River corridor.



SHELLEY BANKS

The clean, cold, emerald-green waters of Oregon’s fabled North Umpqua River support strong runs of salmon and steelhead (left). Flanked by the 79-mile North Umpqua Trail, it is a recreationist’s paradise.

TYLER ROEMER

# Saving a Key Reach of a Fabled Steelhead Stream

## NORTH UMPQUA RIVER OREGON

**PROJECT SIZE**  
211 acres

**RIVER MILES**  
Mainstem: 1

**ECOREGION**  
Cascades & Klamath-Siskiyou

**KEY ANIMALS**  
Roosevelt elk, black bear, northern spotted owl, river otter

**KEY FISH**  
Coho salmon, spring Chinook, winter and summer steelhead, Pacific lamprey, green sturgeon

### ACCOMPLISHMENTS

On Oregon’s Wild and Scenic North Umpqua River, WRC committed to purchase 211 acres at the head of the renowned North Umpqua National Recreation Trail, at the start of the fly-fishing-only water. The effort will preserve old-growth forest, prime salmon and steelhead habitat, a key trailhead and a mile of trail.

# A Rare Refuge for Fish, Wildlife and People in Southern California

## SANTA MARGARITA RIVER CALIFORNIA

**PROJECT SIZE**  
1,384 acres

**RIVER MILES**  
Mainstem: 5; Tributary: 2

**ECOREGION**  
Mediterranean California

**KEY ANIMALS**  
Mountain lion, western pond turtle, least Bell's vireo, southwestern willow flycatcher

**KEY FISH**  
Southern steelhead, arroyo chub

### ACCOMPLISHMENTS

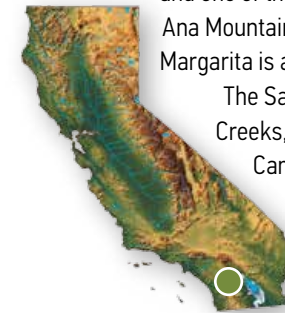
WRC signed an agreement to purchase 1,384 acres along the Santa Margarita River, the southernmost steelhead stream in North America and one of the last free-flowing rivers in southern California. Our effort will conserve the last major unprotected stretch of the river and secure public access for all.

*"The Santa Margarita River is a special place, an oasis for wildlife and a refuge for people where parks are few. The Trails Council has maintained this stretch of the river for decades, and we are thrilled that it will at last be protected, both for its non-motorized, multiuse trails and the wildlife that lives there."*

— DONNA GEBHART, Chair, Fallbrook Trails Council



The Santa Margarita River is one of the last free-flowing rivers in southern California and a lifeline for one of the most biodiverse regions in the continental United States. It provides habitat and connectivity essential to survival in a region that has more rare, threatened and endangered species than any comparable land area in the Lower 48. Protected along much of its length, the Santa Margarita remains the longest intact riparian corridor in southern California and one of the last remaining habitat links between the high desert, coastal Santa Ana Mountains and Pacific Ocean. In a region where water is scarce, the Santa Margarita is a resource of immeasurable importance.



The Santa Margarita begins at the confluence of Temecula and Murrieta Creeks, flows through Temecula Canyon and crosses a broad floodplain at Camp Pendleton Marine Corps Base, finally entering the Pacific near Oceanside. The river corridor provides habitat for 52 mammal species, 43 species of reptile and, most remarkably, 236 bird species, the highest avian diversity on California's southern coast. Of these, 33 are threatened or endangered, including arroyo toad, least Bell's vireo, southwestern willow flycatcher and arroyo chub.

The Santa Margarita also offers the southernmost viable habitat on the continent for endangered southern steelhead.

In late 2015, Western Rivers Conservancy launched an effort to protect five miles of this crucial stream and two miles of Sandia Creek, a key tributary. The effort will connect the 4,000-acre Santa Margarita Ecological Reserve upstream and protected lands within Camp Pendleton downstream. In addition to safeguarding and improving habitat connectivity, the project will conserve 1,384 acres of riparian lands and chaparral, coastal sage scrub and live oak woodland communities, all vital to the region's imperiled wildlife.

Within southern California's bustling and rapidly developing metropolises, the Santa Margarita also offers people the rare opportunity to experience the joys of a free-flowing stream. The river is an exceptional birding destination and is popular among equestrians, mountain bikers and hikers. Western Rivers Conservancy is now working to secure conservation funding and identify a long-term steward that will manage the lands to enhance compatible public access while protecting one of the last free-flowing rivers in southern California.



WRC is conserving an extensive reach of the Santa Margarita River, a lifeline in the arid landscape of southern California and a refuge for hundreds of species of birds, including the southwestern willow flycatcher, least Bell's vireo and California least tern (left).

## Completing Conservation of an Arizona Treasure

In the parched Sonoran Desert, Arizona's Fossil Creek is an oasis, a ribbon of life flowing from a series of mineral springs in the Mogollon Rim down to the Verde River. Water temperatures in the creek hover around 70 degrees Fahrenheit year-round, and the stream's high mineral content creates slick limestone formations and spectacular blue-green travertine pools. River otters, bats, frogs, beavers, a wealth of bird species and nine species of native warm-water fish all inhabit the stream. Fossil Creek is a true haven for fish and wildlife – but it wasn't always this way.

For nearly a century, Fossil Creek was diverted by a hydroelectric project that left the creek lifeless. Beginning in 1999, state and federal agencies and restoration groups embarked on what would become the largest river recovery effort in the Southwest. A hydroelectric dam was removed from the river, and Fossil Creek flowed wild and free for the first time in a hundred years. Four years later, Congress designated all 17 miles of the creek Wild and Scenic. It is now one of only two Wild and Scenic Rivers in Arizona, the other being the Verde, into which Fossil Creek flows.

In 2015, Western Rivers Conservancy purchased the only remaining unprotected riverland on Fossil Creek, a 19-acre parcel within the Wild and Scenic River corridor. We intend to convey the lands to the Coconino National Forest for permanent protection and to improve the integrity of both the Fossil Creek and Verde Wild and Scenic River corridors. The effort will conserve habitat for numerous special-status species, including endangered southwestern willow flycatcher, threatened yellow-billed cuckoo and threatened Chiricahua leopard frog. As more and more people discover and visit Fossil Creek, WRC's efforts will also help Coconino National Forest minimize impact on this sensitive desert ecosystem.

A wonder in its rarity, Fossil Creek is a refuge for fish and wildlife in the harsh Sonoran Desert and one of only two Wild and Scenic Rivers in Arizona. WRC is conserving the last unprotected stretch.

DAN SORESEN



WRC is acquiring unprotected riverlands within Colorado's Dominguez-Escalante National Conservation Area to conserve habitat for bighorn sheep, elk, mountain lion (below), bald eagle, native warm-water fish and other wildlife.

ERIC DURNAN

## A Ribbon of Life in an Arid Land

The second largest river in Colorado, the Gunnison flows 159 miles from the confluence of the East and Taylor Rivers to the Colorado River. While the upper Gunnison is heavily dammed, the lower river flows freely for over 100 miles, sweeping past rocky bluffs, desert slopes and lush thickets of cottonwood that stand in sharp contrast to the arid landscape of the surrounding plateau.

This lower reach of the Gunnison is one of the few places where all four species of Colorado Basin warm-water fish still survive, and much of the lower river is designated Critical Habitat for these increasingly rare fish. Scenic canyons and sandstone mesas dominate the landscape, and the area is home to desert bighorn sheep, Rocky Mountain elk, mule deer, mountain lion, river otter and bald eagle.

Before the Gunnison meets the Colorado River, it flows through the Dominguez-Escalante National Conservation Areas (DENCA), hemming in the western edge of the Dominguez Canyon Wilderness. The DENCA is rich in archeological sites and offers exceptional hiking, wildlife viewing and boating opportunities.

Despite the area's extraordinary natural and recreational merits, more than 16 miles of the Gunnison within the DENCA remain unprotected. Since 2008, Western Rivers Conservancy has worked to shore up these lands, improve the integrity of the DENCA, conserve habitat for fish and wildlife and enhance public access. To date, we have protected a total of nearly eight miles of the lower Gunnison and tributary streams. In 2015, we worked to convey an additional 190 acres, including another mile of prime river frontage, to the Bureau of Land Management for protection within the conservation area. All told, our efforts on the Gunnison will help ensure this extraordinary river remains healthy, intact and accessible for generations.



Continuing our effort to conserve unprotected reaches of the Gunnison River within Colorado's Dominguez-Escalante National Conservation Area, WRC worked to conserve 190 acres of land, including another mile of prime river frontage.



TOM AND PAT LEESON



DAVE JENSEN

Few streams in the Columbia Basin have the potential that Catherine Creek has when it comes to improving survival rates for juvenile Chinook salmon. WRC's efforts are enabling extensive habitat recovery along a crucial 2.5-mile stretch of the river. (Adult Chinook pictured below.)

## Recovering a Top-Priority Salmon Stream



**WRC protected 545 acres along 2.5 miles of Catherine Creek, one of the Columbia Basin's highest-priority streams for salmon and steelhead recovery. The effort enables extensive restoration of a critical reach of this Grande Ronde/Snake River tributary.**

TOM AND PAT LEESON



Recovering the Columbia River Basin's prodigious salmon runs is one of the great conservation challenges of our time. In addition to being the iconic animal of the Pacific Northwest, salmon are a keystone species upon which the health of a vast ecosystem depends. They are not only vital to the longevity of a watershed spanning more than 260,000 square miles, but central to a way of life for people and communities across the region.

The approaches to salmon recovery are many. Our focus is habitat. By conserving critical spawning and rearing tributaries and improving survival rates for juvenile fish, we can improve the health of runs throughout the greater Snake River system. An example of this is our work on Catherine Creek.

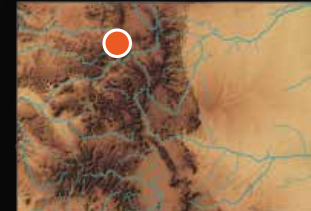
Catherine Creek is a small stream in eastern Oregon that tumbles cold and clear out of the Wallowa Mountains. It is a tributary to the Grande Ronde, which flows into the Snake, the largest tributary to the Columbia River. Small as it is, Catherine Creek contains some of the highest-priority habitat for summer steelhead and spring Chinook in the Snake and Columbia River basins.

In February 2014, WRC purchased a 545-acre ranch spanning 2.5 miles of Catherine Creek, where rearing habitat has been severely degraded for decades. In 2015, we conveyed the lands to the Confederated Tribes of the Umatilla Indian Reservation, which has received funding to extensively restore this stretch of creek. The project will recreate healthy original stream habitat and dramatically improve survival rates for overwintering fish.

The salmon and steelhead runs on the Snake were once one of the largest in the West, but are now the most imperiled runs in the Columbia Basin. Our acquisition on Catherine Creek will play a small but essential part in bringing those runs back to life.

## A Conservation Success on the Upper Yampa River

In Colorado, Western Rivers Conservancy successfully completed a landmark project that protected some of the most productive trout water on the upper Yampa River. We conserved a 45-acre property called Hubbard's Summer Place, which spans a half-mile of the Yampa at the confluence of Sarvis Creek, three miles downstream from Stagecoach Reservoir.



WRC conveyed the property to the Bureau of Land Management and U.S. Forest Service, which will now manage it for its outstanding conservation and recreation values. The property lies just 13 miles from Steamboat Springs, on the banks of a classic tailwater fishery. Local anglers covet this stretch of the Yampa for its outstanding fishing, and Colorado Parks and Wildlife is working to recover native mountain whitefish.

The property was one of the few remaining unprotected private parcels in an area that is blanketed by public lands, including the Sarvis Creek Wilderness Area, Sarvis Creek State Wildlife Area, Routt National Forest and BLM lands. The area supports a variety of wildlife, including Rocky Mountain elk, black bear, mountain lion, Canada lynx and dusky grouse, and has stands of black cottonwood, red osier dogwood and serviceberry as well as aspen, spruce, fir and lodgepole pine.

WRC learned about the Hubbard property in 2011 while working with the BLM to conserve a ranch at the entrance of Cross Mountain Canyon, on the lower Yampa. At the request of the BLM and local conservation groups, we purchased the Hubbard lands in 2013. Thanks to an outpouring of community support, WRC was able to secure enough funding to convey the lands to the agencies in late 2015. Now, this beloved stretch of the Yampa is protected and open to all.

WRC successfully conserved a reach of the upper Yampa River that is cherished by anglers yet was closed to the public for decades. It is now open to everyone.



RUSS SCHNITZER

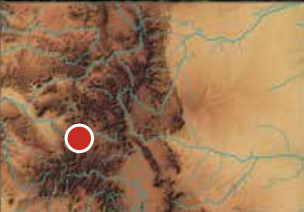
# Reviving a First-Rate Colorado Trout Stream

Western Rivers Conservancy continued its effort to reestablish year-round flows in the Little Cimarron River, an outstanding Colorado trout stream that flows from the Uncompahgre Wilderness to the main-stem Cimarron, a tributary to the Gunnison River. The upper 13 miles of the Little Cimarron possess all the qualities of a first-rate wild trout stream, with cold, clean water and abundant, naturally reproducing rainbow and brook trout. Along its

middle reaches, however, the river flows only intermittently, dewatered by the irrigation ditches of the lower Cimarron Valley.

Since 2012, WRC has been working to permanently reconnect habitat between the lower and upper reaches of the river. Our first step was purchasing

a farm with senior water rights on McKinley Ditch, which draws heavily from the Little Cimarron. In 2014, we conveyed the water rights to Colorado Water Trust, which is now working to create Colorado's first permanent water-sharing agreement between agriculture and the environment. Our goal is to establish a shared season that keeps water on the farm, yet prioritizes flows in the Little Cimarron during the driest times of the year. If we and the Water Trust are successful, the Little Cimarron will flow uninterrupted all year long, temperatures in the lower river will decrease, and trout will repopulate the formerly dewatered reach of the stream. It is a complex project and one with potential to serve as a model for river conservation not only in Colorado, but throughout the West.



A major grant from Oregon Parks and Recreation Department will allow WRC to permanently conserve Punchbowl Falls and the confluence of the East and West Forks of the Hood River. The river is home to northern river otter (below) and numerous anadromous fish species.

## A Park in the Making at Punchbowl Falls



**WRC secured a major grant that set our project at Punchbowl Falls, on Oregon's Hood River, on the path to completion. We can now convey the lands to Hood River County to permanently protect the falls and the East and West Fork confluence forever.**

For over a century, residents of Oregon's Hood River Valley have envisioned a park at Punchbowl Falls on the Hood River. Here, the West Fork Hood, after its descent from glacial headwaters on Mount Hood, plunges over a basalt ledge into a giant bowl, set within a natural basalt amphitheater carved into the river gorge. The scene is made all the more stunning by the East Fork Hood, which tumbles into the West Fork immediately below the falls. Throughout the year, returning salmon and steelhead can be seen holding in the pool, gaining vital energy before they hurdle the falls and continue upstream to spawn.

This spectacular site has long been popular among hikers, anglers, boaters and swimmers and is sacred to Native Americans, who have fished the pool since time immemorial. The Hood River itself is utterly unique, in that it sustains the most diverse assemblage of anadromous and native fish species in the Columbia River Basin. It is also entirely free-flowing: In 2010, the utility PacifiCorp removed Powerdale Dam on the lower Hood, returning the river to its wild status for the first time in more than 90 years.

Understanding the confluence's crucial importance to the Hood River system as a whole, Western Rivers Conservancy purchased 103 acres surrounding both the confluence and the falls. We have since been working to place the lands into public stewardship with Hood River County and protect this magnificent site for all to enjoy. Last year, we came one step closer when we secured a \$470,000 grant for the county from Oregon Parks and Recreation Department. WRC is donating the remaining \$575,000 in land value to the county to make conservation, and the park, a reality at last.



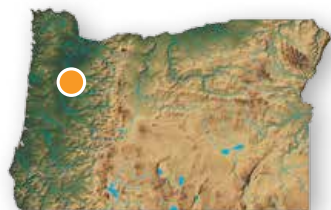
Opposite page: During the driest months of the year, this upper reach of the Little Cimarron is disconnected from the lower river when a critical stretch gets dewatered for irrigation. WRC's efforts will ensure this prized trout stream flows uninterrupted year-round.



TYLER ROEMER

The North Santiam is one of the most important salmon and steelhead streams in the Willamette Valley and supports excellent habitat for imperiled wildlife, including pileated woodpecker, red-legged frog and western pond turtle (below).

## Protecting Forests, Fish and Wetlands in the Willamette Basin



**In Oregon's Willamette Valley, WRC completed a project that created a 429-acre assemblage of protected riverlands along the North Santiam River. We also committed to purchase an additional 411 acres of prime fish and wildlife habitat upstream.**

Oregon's North Santiam River rises in the Cascade Range and descends quickly toward the Willamette Valley, where it slows to a broad meander and nourishes some of the finest remaining lowland riparian habitat in the state. On these lower reaches, Western Rivers Conservancy is working to shore up prime fish and wildlife habitat by purchasing properties with intact riparian areas and excellent potential for reconnecting the river with its floodplain.

In 2015, we took two major strides in this effort. We conveyed a 91-acre farm to the Confederated Tribes of Grand Ronde, and we committed to purchase an additional 411 acres of riverland upstream. The conveyance completed a 429-acre assemblage that now protects 2.5 miles of mainstem and side-channel habitat, as well as significant swaths of closed-canopy riparian forest and rare wetlands. The Tribe named these lands "Chahalpam," meaning "Place of the Santiam Kalapuya people" and will steward them for the sake of imperiled Willamette Valley fish and wildlife. The project prevented gravel mining on the banks of the river and set the stage for one of the most significant floodplain restoration projects in the Willamette Valley. We are now working to conserve the 411-acre farm upstream, an effort that will protect another 1.5 miles of mainstem frontage and 2.75 miles of tributary habitat.

Historically, the North Santiam produced two-thirds of the Willamette River's winter steelhead and a third of its spring Chinook. All of the project lands contain excellent spawning and rearing habitat for these species, which are both protected under the Endangered Species Act. The properties possess excellent habitat for Oregon chub, which are recovering from near extinction, as well as prime habitat for imperiled species like western pond turtle, red-legged frog, pileated woodpecker and hooded merganser.



ADAM CLAUSE

## Completing Conservation of an Oregon Treasure

For nearly two decades, Western Rivers Conservancy has been working to conserve unprotected reaches of Oregon's Sandy River and its tributaries, the Little Sandy, Bull Run and Salmon Rivers. The Sandy is a remarkable stream, flowing from glacial headwaters in the Mount Hood Wilderness, through deep river canyons and lush forests down to the Columbia River. Only 25 miles from Portland, the Sandy provides exceptional recreation



opportunities, including hiking, boating and bird-watching and one of the best sport fisheries in the region.

In 2007 and 2008, Portland General Electric removed its dams on the Sandy and Little Sandy Rivers. With no dams on the Columbia below the Sandy, the river once again provided an unimpeded pathway for salmon and steelhead, from its headwaters all the way to the Pacific. In conjunction with the dam removals, WRC partnered with PGE to conserve over 4,000 acres of riverland and create an unprecedented conservation and recreation corridor along the middle reaches of the Sandy. WRC conveyed those lands to the Bureau of Land Management, and over 17 miles of the Sandy and Little Sandy Rivers are now protected within a BLM Area of Critical Environmental Concern.

WRC completed the core of this project by 2012, yet we continue to purchase and conserve lands along these rivers whenever they become available. Last year, we acquired 120 acres along a small salmon and steelhead spawning tributary called Little Joe Creek. In addition to protecting vital fish habitat, the effort linked an existing county park with protected BLM lands and enabled expansion of the Sandy Ridge Trail System. Managed by the BLM, the trail system opened in 2010 and has since become one of the top mountain biking trails in the country.

WRC has created a conservation and recreation corridor along 17 miles of the Sandy River, creating access for river-lovers and ensuring this gem of a glacial river remains forever healthy for fish and wildlife.





TOM AND PAT LEESON

Roosevelt elk cross Washington's Hoh River. Flowing from its glacial headwaters on Mount Olympus, the Hoh is one of the West's great salmon and steelhead streams. WRC created a conservation and recreation corridor along 20 miles of the river between the Pacific and Olympic National Park.

## Consolidated Statement of Financial Position

As of September 30, 2015

	2015	2014
<b>Assets:</b>		
Cash and cash equivalents	\$1,156,036	1,358,824
Restricted deposits and reserves	965,409	586,410
Grants, interest and other receivables	1,919,616	450,009
Prepaid expenses and deposits	61,016	46,983
Investments	1,250,345	2,047,379
Notes receivable	16,761,020	8,351,020
Land holdings, equipment and other assets	32,647,669	15,248,043
<b>Total assets</b>	<b>\$54,761,111</b>	<b>28,088,668</b>
<b>Liabilities:</b>		
Accounts payable, grants payable and accrued expenses	575,254	203,537
Notes and interest payable	31,738,610	19,684,680
<b>Total liabilities</b>	<b>32,313,864</b>	<b>19,888,217</b>
<b>Net Assets:</b>		
Unrestricted	13,585,993	6,457,760
Temporarily restricted	7,708,788	593,725
Permanently restricted	1,152,466	1,148,966
<b>Total net assets</b>	<b>22,447,247</b>	<b>8,200,451</b>
<b>Total liabilities and net assets</b>	<b>\$54,761,111</b>	<b>28,088,668</b>

## Consolidated Statement of Activities

For the fiscal year ending September 30, 2015

	Unrestricted	Temporarily Restricted	Permanently Restricted	Total 2015	Total 2014
<b>Revenues:</b>					
Contributions and grants	\$660,004	16,532,729	3,500	17,196,233	5,361,057
In-kind contributions	26,659			26,659	38,789
Investment return	173,731			173,731	87,439
Gain realized on sale of land	241,600			241,600	321,600
Reimbursements, fees & other	1,097,169			1,097,169	961,504
<b>Total revenues</b>	<b>2,199,163</b>	<b>16,532,729</b>	<b>3,500</b>	<b>18,735,392</b>	<b>6,770,389</b>
Net assets released from restriction	9,417,666	(9,417,666)			
<b>Total revenues &amp; other support</b>	<b>11,616,829</b>	<b>7,115,063</b>	<b>3,500</b>	<b>18,735,392</b>	<b>6,770,389</b>
<b>Expenses:</b>					
Program	3,733,957			3,733,957	3,050,927
Management and general	379,123			379,123	410,751
Fundraising	375,516			375,516	348,628
<b>Total expenses</b>	<b>4,488,596</b>	<b>-</b>	<b>-</b>	<b>4,488,596</b>	<b>3,810,306</b>
Change in net assets	7,128,233	7,115,063	3,500	14,246,796	2,960,083
Net assets at beginning of year	6,457,760	593,725	1,148,966	8,200,451	5,240,368
<b>Net assets at end of year</b>	<b>\$13,585,993</b>	<b>7,708,788</b>	<b>1,152,466</b>	<b>22,447,247</b>	<b>8,200,451</b>

This financial information is excerpted from Western Rivers Conservancy's audited financial statements. To obtain a complete copy of the audit by the firm of Gary McGee & Co., please contact Western Rivers Conservancy.

# Acknowledgments

Western Rivers Conservancy greatly appreciates gifts from all of our supporters. The individuals, foundations, businesses, organizations and agencies below contributed \$100 or more between October 1, 2014 and September 30, 2015. For a full list of supporters, visit [www.westernrivers.org](http://www.westernrivers.org).

## Individuals

Michael Aarnio  
Stan Aarsund  
Manny Abascal  
Mike Abbott  
Eric Adema  
Kimmo Akerblom  
Mike Aldrich  
Bruce and Leslie Allbright  
Frederick Allington  
Peder Allison  
Randy Allworth and Julie Miles  
Burtram and Ellen Anderson  
Clifford Anderson  
Craig Anderson  
David Anderson  
Lauren Anderson  
Pamela Anderson  
Robert and Susan Anderson  
Gary and Mary Lee Andrews  
Robert and Susan Appleton  
Ellen Arietta and Craig Richter  
Phil Armstrong  
Jim Arnett  
Kim Arrivee  
Tod Asmussen  
Jean and Ray Auel  
Lauri Aunan  
Denison and Bitsy Bacon  
Peter Bahls and Jude Rubin  
Marianne and Maurice Bales  
Tom Bard  
Brian and Sally Barker  
Jerry Barnhart and Evelyn Rose  
Rod Barnhart  
W. Randolph Barnhart and Mary Lou Paulsen  
John Baughn  
Bob and Janette Bayly  
Chan Beals  
Hal Beaver  
Missy and Peter Bechen  
Jay Beckstead  
Betsy and Walter Bennett  
Suzanne and Ennalls Bert  
Inice and Keith Beverly  
Dennis Biggins  
Alexander Bing  
James Bisgard and Kathryn Temple  
Bob Blais  
Jim and Nancy Blake  
Nicholas Bolognini  
Candace Bonner  
Winston Bradshaw  
Robert Brady  
Nancy and Thomas Brady  
Julie and Peter Braman  
Helen and Joseph Breed  
Douglas Broadie  
Daniela Brod  
Gerald and Kristine Brooks  
Ann and Tim Brown  
Bill and Laura Brown  
Joseph Brown  
Dena and Larry Brown  
Willis Brown  
Joan and Mason Browne  
Glen and Debra Bruels  
James Buatti  
Fred and Jane Buckner  
Bob Burdick  
David Burdick  
Kathleen Burke  
Ronnie Burows  
William and Janet Bush  
Eugene Butler  
Jim Byrne  
Mark Caffee and Kristine Mackessy

David Cahalan  
Steven Call  
Tom Callahan  
Clayton and Nancy Campbell  
Amy and Clifford Cancelosi  
Clifford Canepa  
Susan Carabello  
Robert Carlson and Stacey Starcher  
Virginia Carlson  
John Case  
Stan Chesshir and Patsy Feeman  
Yvon Chouinard  
Alan and Judy Christensen  
Alan Christian  
Ann Claassen  
Sally Claassen and Mark Darlington  
Timothy Clancey  
Gregory Clayton  
Jill and Collin Cochrane  
Kenneth Cochrane  
James Coleman  
Bill and Susan Coleman  
Frank Collin  
Bruce Collins  
Dennis Collins and Mary Ann Weber  
Carol Congdon  
Jane Conover  
Donna and Stan Cook  
Tom Cook  
Dan Corbett  
James Correa  
John Corso  
Dale Cox  
Jim Cox and Brenda Nuckton  
Roger and Susan Cox  
Robert Crandall  
Michael Crawford  
Brewster and Rebecca Crosby  
Chris Crosby  
Steve Cummins  
Jeff Curtis  
Rick da Silva  
Paul D'Amato  
Allen and Delphine Damon  
James Darragh  
Michael Davis  
Peggy Day  
Patricia and Peter de Garmo  
Marshall Deacon  
Jeff and Anita Degen  
Craig Derby  
Mark DeSanto  
Dennis Di Julio  
Bruce and Donna Dickinson  
Karl Dinkelspiel  
John Dirr  
Wayne Dockstader  
Sue Doroff and Holly Duncan  
Dwight Doty  
Stephen Downes  
Cecil Drinkward  
Gary and Georgianne Duback  
Michael Duffy  
J Dugan Rupp  
Charles and Judith Dvorak  
Gregory Eaglin  
Donald Edwards  
Julie Edwards  
Craig Eggers  
Jill Einstein and Peter Yolles  
Karen and Craig Eisenhauer  
Larrie Elhart  
Grey Elliot  
Arthur and Margianne Erickson  
Craig and Sally Falkenhagen  
James and Linda Fenner

Joseph Ferguson  
Roy Ferguson  
Henry Field and Sandra Gamble  
Michael Findley  
Paul Finkle  
Peter Fisher  
Richard Fogel  
Harold Forster  
Bruce Forsythe  
David Fortunato  
Dan and Sheri Foster  
Kirby and Marta Franklin  
Paul Franklin and Sandy Japely  
Robin and Bonnie Fraser  
William Fraser  
Jonah Freedman  
Ann Claassen  
Fletcher Frisch  
Charles and Roberta Frumerie  
Bruce Fulmer  
Nathaniel Funk  
Donn Furman  
Bill Gardner  
Fred and Karen Garmire  
Robert Gates  
Jim Genes  
Michael Gentry  
Richard Gerten  
Albert Giorgi  
Donna and Jack Glode  
Jim Goedhart  
Al Goldner  
Daniel and Anne Goldsmith  
Red Goodwin  
Andrew Gottlieb  
Geoffrey and Jacki Gouette  
Debbie and George Grable  
Bill Graeber and Cynthia Wilson  
Bob Graham  
Terence and Tammie Grant  
Stephanie Greer  
Rob Griffith and Meg Carman  
Ken Grossman and Katie Gonser  
Louise Grunewald  
Paul Grycko  
Amy and Chris Gulick  
Lance Gyorfi  
Gary Hahn  
Ellen and Richard Hall  
Peter Halmos  
John Hammerstad  
Lisa Hansen  
James Hanson  
Brent Harding  
Jessie Harris  
Marvin and Penny Harrison  
Jan and Randy Harrison  
John Hartmann  
Jack and Susan Havens  
Steve and Jill Hayward  
Martin Healy  
Frederick Heath  
David Heck and Gloria Wong  
Peter Heitman  
Dave and Judy Heller  
Mark Hendricks  
Dwight Hendrix  
Frances Henning  
Bill Henry  
Fran Hepp and Ed Hepp, Jr.  
Avi Hesterman and Jane Logan  
Lee Hickok  
Daniel Highkin and Margaret Klute  
Jim Hirzel  
Neal Hoffberg  
Gregg and Sherri Hofland  
John Holing  
James and Randi Holland  
Walter Hollands

Steven Hollowell  
Pat and Richard Holten  
Elizabeth and Michael Hom  
Yoshi Hosaka  
Bruce Hostettler  
Mark Howitson  
Tom Hoyt  
Bart Hughes  
Doyle and Susie Hughes  
Carol and Ron Hulett  
Jerry Hulsman  
Forrest and Susan Hunter  
Don Hurst  
William Hutton  
Bob Iness  
Mike Ivie  
Jeff Jacob  
Grant James  
William James  
Felton Jenkins  
Donald and Susan Jenkins  
Paul Jennings  
Ken Jensen  
Roger Jester  
Betsy Jewett and Rick Gill  
Drew and Salli Johnroe  
Mark Johnsen  
Jim Johnson  
Karl Johnson  
Ray Johnson  
Robert and Deborah Johnson  
Darrel and Georgia Johnston  
Stephen Johnston  
Brady Johnstone  
Malcolm Jollie and Ann Giesel  
Norbert Leupold, Jr.  
Dexter Levandoski  
Vic Leverett  
Alexander Levine  
Dean Lewis  
Abe Lillard and Julia Kalmus  
Peter Lillevand  
Henry Little  
William Little  
Douglas Livermore  
Lynn and Jack Loacker  
Nina Jackson and Ellen Lockert  
Tom Long  
Martin Loomis  
Alfred Lounsbury  
Trevor Loy  
Jeff Ludlow  
Jon Lund  
Anne and Jim Lundberg  
John and Gloria Lundeberg  
Bruce Lyon

Mark Kircher  
Nancy Kittle  
Simon Klevansky  
Tim Knapp and Lucretia Sias  
Calvin and Maureen Knight  
Mitch and Wendy Knight  
David Koeller  
Polly Koenigsknecht  
Molly Kohnstamm  
Robert Krein  
Rick Krizanich  
Barbara and J. Christian Kryder  
Reuel Kurzet and John Moore  
Teena and Paul Kusche  
David Kwolek  
Randy Labbe  
Ted Labbe and Kelly Rodgers  
Suzanne Lagoni  
Erik and Molly Lallum  
William Scott Lammers  
Sand Lamoreux  
William and Jeanne Landreth  
Helena Lankton  
Cregg Large  
Peter Laskier  
Jackson Latham  
Charles Lauckhardt  
Brian Lauer  
William Lawrence  
Robert Leasure  
Gary Leaverton  
Russell Leavitt  
Patrick Lee  
Scott Leete  
Christine Leupold and Norbert Leupold, Jr.  
Dexter Levandoski  
Vic Leverett  
Alexander Levine  
Dean Lewis  
Abe Lillard and Julia Kalmus  
Peter Lillevand  
Henry Little  
William Little  
Douglas Livermore  
Lynn and Jack Loacker  
Nina Jackson and Ellen Lockert  
Tom Long  
Martin Loomis  
Alfred Lounsbury  
Trevor Loy  
Jeff Ludlow  
Jon Lund  
Anne and Jim Lundberg  
John and Gloria Lundeberg  
Bruce Lyon

William Lyon  
Bill Macdonald  
Kathy MacNaughton  
Bob and Betsy Manger  
Richard and Elizabeth Marantz  
Bob and Christy Marchant  
Robert and Susan Marett  
James Marshall  
Jed Marshall  
Kevin Marshall and Sigrid Olsen  
John Martin  
Travis Mason  
Kevin and Cheryl Mather  
Robert Matsushige  
Jason Matz  
Peter Maunsell  
Jeff May  
James Mayol  
Dennis McCann  
John and Nancy McCormick  
Michael McDewitt  
Tim McDowd  
Jim McGannon  
Michael McGannon  
Nancy McKay  
Larry and Suzi McKinney  
Bruce and Claire McKnight  
Andrew McLaughlin  
Robert McMonigle  
Dave McNamara  
Patrick and Rebecca McRae  
James and Jan McRoberts  
Paul Melinkovich  
Shawn Merrill  
Charles and Nancy Mertel  
Ronald Mertens  
Gregg Messel  
John and Patricia Metcalf  
Mark Metzdrorf  
Michael Metzler  
Edward and Kirsten Meyer  
Linda and Mat Millenbach  
Bonnie and Gary Miller  
Richard and Ann Miller  
Ryan Mills  
John Miskulin  
Pete Moffat  
Karen and Rolf Mogster  
Eric Moldestad  
Richard and Susan Moore  
Carol and Ed Morrison  
N. James Morse  
Paul Mortimer and Mary Starrs  
Duval Moss  
Geoff Motlow  
Peter Moyle

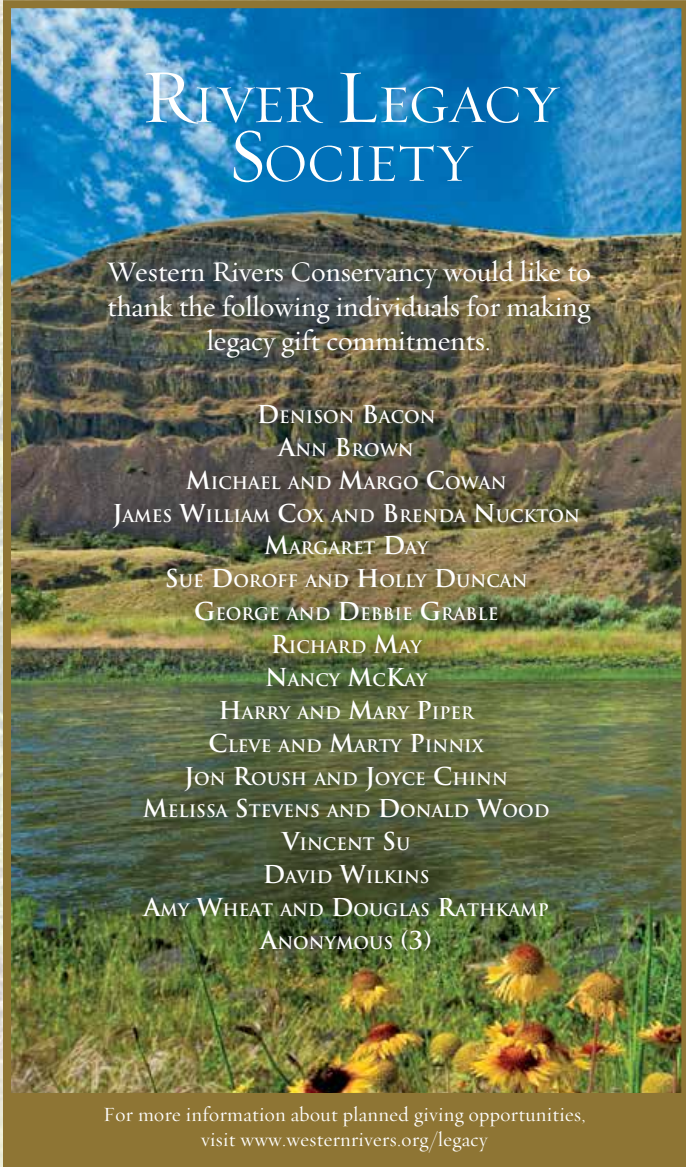
Dennis Muzzana and Kathleen Docherty-Muzzana  
Damon Nasman  
David Nelson  
Dick Neuman  
Bonnie and Tim Newman  
Jack Nichols  
Robert Nimmo and Linda Jensen  
Donald Norene  
Carol and Ray North  
Pat and Wally Nowak  
Mary Oberst and Ted Kulongoski  
Kim and Steve O'Brien  
Francis Ogden  
Allen Olsen  
Dennis Olson  
Phoebe Olson  
Jed Marshall  
Kevin Marshall and Sigrid Olsen  
John Martin  
Travis Mason  
Kevin and Cheryl Mather  
Robert Matsushige  
Jason Matz  
Peter Maunsell  
Jeff May  
James Mayol  
Dennis McCann  
John and Nancy McCormick  
Michael McDewitt  
Tim McDowd  
Jim McGannon  
Michael McGannon  
Nancy McKay  
Larry and Suzi McKinney  
Bruce and Claire McKnight  
Andrew McLaughlin  
Robert McMonigle  
Dave McNamara  
Patrick and Rebecca McRae  
James and Jan McRoberts  
Paul Melinkovich  
Shawn Merrill  
Charles and Nancy Mertel  
Ronald Mertens  
Gregg Messel  
John and Patricia Metcalf  
Mark Metzdrorf  
Michael Metzler  
Edward and Kirsten Meyer  
Linda and Mat Millenbach  
Bonnie and Gary Miller  
Richard and Ann Miller  
Ryan Mills  
John Miskulin  
Pete Moffat  
Karen and Rolf Mogster  
Eric Moldestad  
Richard and Susan Moore  
Carol and Ed Morrison  
N. James Morse  
Paul Mortimer and Mary Starrs  
Duval Moss  
Geoff Motlow  
Peter Moyle

Mark Scantlebury  
Malcolm Schleh  
James Schmidt  
Charles Schweizer  
Tom Scrugham  
G. Mark Seal  
Todd and LeAnn Shaw  
Larry Shelburne  
Michelle Sheldon  
Elmo Shropshire and Pam Wendell  
Leslie and Tom Shuhda  
Raymond Silcox  
Kathryn and Robert Simpson  
Jennifer Sims  
Aaron Smith  
Karen Seymour and Blake Smith  
James Smith  
Jim Smith  
Morgan Smith  
Robert Smith  
Lorenzo Snider and Cheryl Nangeroni  
Randall Sobczak, DDS  
David Sonne  
Bailey Sory  
Craig and Vicki Sosey  
Peter Soverel  
Kris Spanjian  
Susan Sparks  
Ken Spearing  
Leon and Sen Speroff  
Tia Wulff  
Bruce Stephens  
Terry and Zoe Sternberg  
Mary Lou Sternitzke  
Chris and Jana Storm  
Mel Strange  
Bonnie and Dane Straub  
James Street  
Mark Stromme  
Chris Stromsness  
John and Melody Sullivan  
Scott Sullivan  
Ryan Swanson  
Kim Swartz  
Adele Sykes  
Greg Takata  
Carson Taylor  
Stephanie Taylor  
Max Templin  
Judith Teufel  
Garry Theroux  
Gary Thomas  
Richard Thomas  
Jeffrey Thompson  
Roy and Rosalind Thompson  
Liam and Felicia Thornton  
Ralph and Sandra Tiedeman  
Dick Tipton  
Thomas Tongue  
Tom Toretta  
Gary Stiegler and Cindy Tripp  
Thomas Truesdell and Judith Pauwels  
William and Doree Trzaskos  
Mark Turley  
Libby Tyree-Taylor  
Alvin Urquhart  
Dan Valens and Rex Holt  
Aaron Van Schyndel  
David Vangilder  
Stephen Verigin  
John Voigt  
Meredith and Patrick von Tscharnier  
Charles Wade  
Mike Wade  
Paul Wagner  
Michael Wald and Deb Tribett  
David Wallace  
James Wallace  
Charles Walter  
Dr. J. V. Ward  
Arthur Warner  
Keith and Lori Warren  
Russell Watt  
Willy Weeks and Marilyn McDonald  
Kai Welch

Ann Wellman  
David Wensky  
Dennis Wentz  
Effie Westervelt  
Carl Westphal  
Everett White  
Todd Whitfield  
Carol and Tim Whitsel  
Barbara and Ronald Wick  
Ron Wierenga  
Linton Wildrick  
Richard Wilkens  
David Wilkins and Serena Crawford  
Christopher Willard  
Bruce and Stephanie Williams  
Jack Williams and Cindy Deacon Williams  
Joe and Marilyn Williams  
Erin and Josh Williams  
Mitch Williams and Nancy Hegg  
Heggie and Julie Wilson  
Doug Wilwerding  
Martin and Carolyn Winch  
Michael Winn  
Steven and Gail Wish  
Jeff and Donnalee Wissing  
Brett Wolfe  
Raymond Wolsfelt  
Tim and Sharon Wood  
James Wright  
Ken and Ruth Wright  
Tia Wulff  
Richard Yaros  
Phyllis Yes  
Douglas and Jennifer Yoshida  
Jim Young and Patty Taylor-Young  
Robert Young  
Chuck Yuva  
Robert Zasoski  
Joe Zell  
Dale Zulauf and Jonette Bronson  
Grayson Zulauf

## Foundations

Autzen Foundation  
The Bluebrook Foundation  
William M. Brod Fund of The Oregon Community Foundation  
L. P. Brown Foundation  
The Burning Foundation  
The Cabana Fund of The Oregon Community Foundation  
The Collins Foundation  
Compton Foundation  
Margaret Watt Edwards Foundation  
Jacob and Terese Hershey Foundation  
Horizons Foundation  
George F. Jewett Foundation  
Jubitz Family Foundation  
The Keneda Fund  
The Joseph and Vera Long Foundation  
LOR Foundation  
Maggie Purves Fund of The Oregon Community Foundation  
Charlotte Martin Foundation  
Meyer Memorial Trust  
M.J. Murdock Charitable Trust  
National Fish and Wildlife Foundation  
New World Foundation  
The Norcross Wildlife Foundation  
Piper Family Fund of The Minneapolis Foundation  
Prairie Foundation  
Ray-Griffin Foundation  
Carol and Velma Saling Foundation  
Schamp Family Fund of The Oregon Community Foundation  
Seattle Foundation



Serrurier Family Fund of The Oregon Community Foundation  
Silicon Valley Community Foundation  
Smith-Piwa Foundation  
Soka Piwa Foundation  
Spirit Mountain Community Fund  
Jim and Ginger Tolonen Family Fund of the Silicon Valley Community Foundation  
Weeden Foundation  
Weyerhaeuser Family Foundation  
Marie C. & Joseph C. Wilson Foundation  
The Wyss Foundation

Mission Peak Fly Anglers  
Oregon Watershed Enhancement Board  
Overlake Fly Fishing Club  
Peninsula Fly Fishers  
Rainland Fly Casters  
Southern Oregon Fly Fishers

## Businesses

Abel Reels  
AmazonSmile Foundation  
Arctic Reservations  
Argonaut Wine and Liquor  
Big Trout, Inc.  
Boeing  
Coblentz, Patch, Duffy & Bass LLP  
The Conservation Alliance  
Con-Way, Inc.  
Costco  
E and E Publishing  
Evermine  
Ferguson Wellman Capital Management, Inc.  
Fishpond  
Gallatin International LLC  
Google, Inc.  
Hewlett-Packard  
Homefest  
Hotel Condon  
Iberdrola Renewables LLC

Jacob Laboratories  
K.F.J. Builders  
Kerr Pacific Corporation  
Little Creek Outfitters  
Medtronic  
Microsoft  
Network for Good  
Nike  
Oracle Corporation  
Pacific Power Foundation  
Portland General Electric  
Rising LLC  
Sanders Chiropractic  
Shell Oil Company Foundation  
Sierra Nevada Brewing Co., Inc.  
Tahoe Oral Surgery and Implant Center  
TechSoup  
TOTE Maritime Alaska  
UBS Financial Services Inc.  
Union Bank Foundation  
Western Rise  
Winding Waters River Expeditions

## Agencies and Organizations

Bainbridge Island Fly Fishers  
Clackamas Fly Fishers  
Clark-Skamanian Flyfishers  
Conservation Northwest  
Crater Lake Institute  
Deep Creek Fly Fishers  
Diablo Valley Fly Fishermen  
Fly Fishers of Davis  
Flycasters, Inc. of San Jose  
LN Greenleaf Masonic Lodge  
Grizzly Peak Fly Fishers

# Some of our Program Partners

American Whitewater  
Bonneville Power Administration  
California Coastal Conservancy  
California Council of Land Trusts  
California Department of Fish and Wildlife  
California Natural Resources Agency  
California Trout  
California State Water Resources Control Board  
California Wildlife Conservation Board  
Capitol Land Trust  
Clackamas County  
The Climate Trust  
Coalition of Oregon Land Trusts  
Coblentz, Patch, Duffy & Bass LLP  
Columbia Land Trust  
Colorado Coalition of Land Trusts  
Colorado Division of Reclamation, Mining and Safety  
Colorado Division of Wildlife  
Colorado Open Lands  
Colorado Water Trust  
The Confederated Tribes of Grand Ronde  
Confederated Tribes of the Umatilla Indian Reservation  
The Confederated Tribes of Warm Springs  
Conservation Northwest  
Douglas County  
Ducks Unlimited  
ecoPartners  
Fallbrook Public Utility District  
Fallbrook Trails Council  
The Freshwater Trust  
Friends of the Elk River  
Friends of the Yampa  
Gilliam County Soil and Water Conservation District  
Gilliam County Weedmaster

Green Diamond Resource Company  
Hancock Timber Resource Group  
Heart of the Rockies Initiative  
Helendale Community Services District  
Hoh River Trust  
Hood River County  
Hood River Valley Residents Committee  
Hood River Watershed Group  
Idaho Coalition of Land Trusts  
Kendeda Fund  
Land Trust Alliance  
Law of the Rockies  
LOR Foundation  
Marine Corps Base Camp Pendleton  
Mesa Land Trust  
Montana Fish, Wildlife & Parks  
National Fish and Wildlife Foundation  
NOAA Fisheries  
National Wildlife Refuge Association  
North Santiam Watershed Council  
Northern California Regional Land Trust  
Opportunity Fund  
Oregon Department of Fish and Wildlife  
Oregon Parks and Recreation Department  
Oregon State Weed Board  
Oregon Watershed Enhancement Board  
Oregon Youth Conservation Corps  
PacifiCorp  
The David and Lucile Packard Foundation  
Pacific Northwest Trail Association  
Portland General Electric  
Portland Water Bureau  
Resources Law Group  
Rio Grande Headwaters Land Trust

Rio Grande Natural Area Commission  
Rio Grande Water Conservation District  
Sandy River Basin Partners  
Sandy River Basin Watershed Council  
Sawtooth Society  
Sherman County Soil and Water Conservation District  
Sierra Nevada Brewing Company  
Sierra Pacific Industries  
Smith River Alliance  
South Coast Watersheds Council  
South Puget Sound Salmon Enhancement Group  
Squaxin Island Tribe  
Steamboaters  
Taylor Shellfish Farms  
Travois  
Trout Unlimited  
U.C. Davis Center For Watershed Sciences  
Umpqua Watersheds  
U.S. Bancorp Community Development Corporation  
U.S. Bureau of Land Management  
U.S. Fish & Wildlife Service  
U.S. Forest Service  
U.S. Natural Resources Conservation Service  
Vital Ground Foundation  
Verde Front – Fossil Creek Working Group  
Washington Department of Fish and Wildlife  
Washington Department of Natural Resources  
Weyerhaeuser Columbia Timberlands  
Wild Rivers Land Trust  
Wild Salmon Center  
Yampa River System Legacy Partnership  
Yampa Valley Land Trust  
Yurok Tribe

# Staff

**Sue Doroff**, President  
**Peter Colby**, Project Manager  
**Jim Cox**, Director of Donor Relations  
**Dieter Erdmann**, Interior West Program Director  
**Rob Griffith**, Senior Counsel  
**Shaun Hamilton**, Project Manager  
**Juliette Harding**, Director of Finance and Administration  
**Ethan Hasenstein**, Corporate Counsel  
**DeVida Johnson**, Office & Database Manager  
**Josh Kling**, Assistant Program Director  
**Mat Millenbach**, Stewardship Director  
**Danny Palmerlee**, Communications Director  
**Rachel Roscoe**, Communications Associate  
**Zach Spector**, Project Manager  
**Anne Tattam**, Grants Manager  
**Everett White**, Project Manager  
**David Wilkins**, Development Director  
**Willis Yarberry**, Director of Lands

# Board of Directors

**Darcy Saiget**, *Chair*  
*White Salmon, WA*  
**Robert Anderson**, *Vice Chair*  
*Corrales, NM*  
**Bill Brown**, *Treasurer*  
*Seattle, WA*  
**Eric Adema**  
*San Francisco, CA*  
**Sue Doroff**  
*Portland, OR*  
**Ken Grossman**  
*Chico, CA*  
**Betsy Jewett**  
*Spokane, WA*  
**Lynn Loacker**  
*Portland, OR*  
**Peter Moyle**  
*Davis, CA*  
**Jon Roush**  
*Portland, OR*

**Jim Smith**  
*Denver, CO*  
**Liam Thornton**  
*Portland, OR*  
**Tim Wood**  
*Lake Oswego, OR*

**Henry Little**, *Director Emeritus*  
*San Francisco, CA*  
**Nan McKay**, *Director Emeritus*  
*Seattle, WA*  
**Cleve Pinnix**, *Director Emeritus*  
*Olympia, WA*  
**Phillip Wallin**, *Director Emeritus*  
*Portland, OR*  
**Jack Williams**, *Director Emeritus*  
*Medford, OR*

**Cover Image:** Rio Grande, San Luis Valley, Colorado.  
Russ Schnitzer.  
**Right:** Minam River, Oregon. Dave Jensen.  
**Back Cover:** Boulder Creek, tributary to the Sandy River,  
Oregon. Steve Terrill.





**MAIN OFFICE**

71 SW Oak Street, Suite 100  
Portland, OR 97204  
(503) 241-0151

**CALIFORNIA OFFICE**

424 Clay Street, Lower Level  
San Francisco, CA 94111  
(415) 767-2001

**COLORADO OFFICE**

1228 15th Street, Suite 215  
Denver, CO 80202  
(303) 645-4953

[www.westernrivers.org](http://www.westernrivers.org)



**WESTERN RIVERS**  
CONSERVANCY